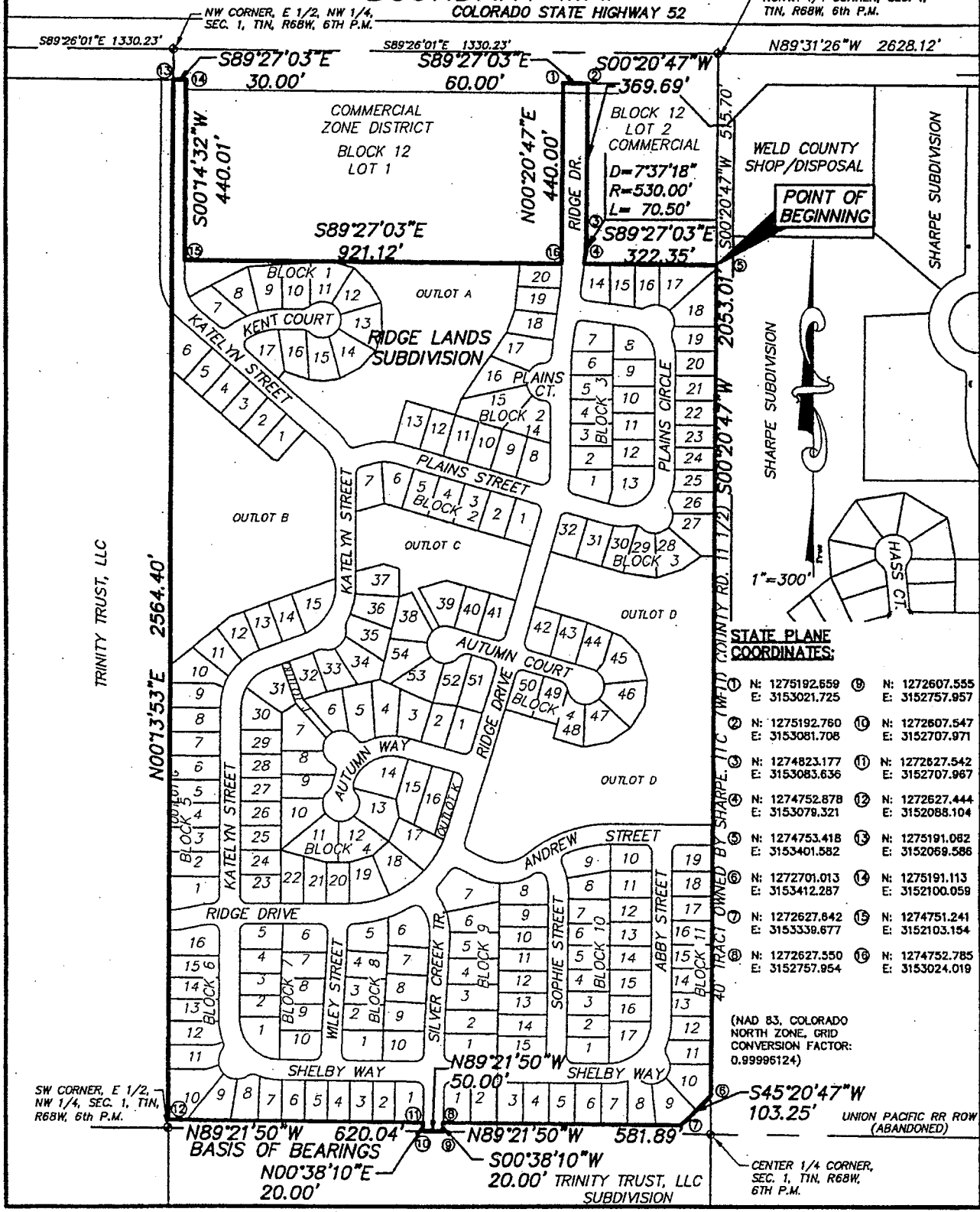


RIDGE LANDS METROPOLITAN DISTRICT BOUNDARY MAP



STATE PLANE COORDINATES:

① N: 1275192.659 E: 3153021.725	⑩ N: 1272607.555 E: 3152757.957
② N: 1275192.760 E: 3153081.708	⑪ N: 1272607.547 E: 3152707.971
③ N: 1274823.177 E: 3153083.636	⑫ N: 1272627.542 E: 3152707.967
④ N: 1274752.878 E: 3153079.321	⑬ N: 1272627.444 E: 3152088.104
⑤ N: 1274753.418 E: 3153401.582	⑭ N: 1275191.082 E: 3152069.586
⑥ N: 1272701.013 E: 3153412.287	⑮ N: 1275191.113 E: 3152100.059
⑦ N: 1272627.642 E: 3153339.677	⑯ N: 1274751.241 E: 3152103.154
⑧ N: 1272627.550 E: 3152757.954	⑰ N: 1274752.785 E: 3153024.019

(NAD 83, COLORADO NORTH ZONE, GRID CONVERSION FACTOR: 0.99996124)

UNION PACIFIC RR ROW (ABANDONED)

CENTER 1/4 CORNER, SEC. 1, T1N, R68W, 6TH P.M.

SW CORNER, E 1/2, NW 1/4, SEC. 1, T1N, R68W, 6TH P.M.

N89°21'50"W 620.04'
BASIS OF BEARINGS
N00°38'10"E 20.00'

N89°21'50"W 581.89'
S00°38'10"W 20.00' TRINITY TRUST, LLC SUBDIVISION

TRINITY TRUST, LLC

N00°13'53"E 2564.40'

1" = 300'

NORTH 1/4 CORNER, SEC. 1, T1N, R68W, 6TH P.M.

S89°26'01"E 1330.23' S89°27'03"E 30.00' S89°27'03"E 60.00' S00°20'47"W 369.69' N89°31'26"W 2628.12'

COMMERCIAL ZONE DISTRICT
BLOCK 12
LOT 1
S89°27'03"E 921.12'

BLOCK 12
LOT 2
COMMERCIAL
D=737'18"
R=530.00'
L=70.50'
S89°27'03"E 322.35'

WELD COUNTY SHOP/DISPOSAL
POINT OF BEGINNING

40' TRACT OWNED BY SHARPE, LLC (WELD COUNTY RD. 11 1/2) S00°20'47"W 2053.01'

S45°20'47"W 103.25'

CENTER 1/4 CORNER, SEC. 1, T1N, R68W, 6TH P.M.